

# Neuroprotective effect of cannabidiol, a non-psychoactive component from *Cannabis sativa*, on $\beta$ -amyloid-induced toxicity in PC12 cells

Teresa Iuvone, Giuseppe Esposito, Ramona Esposito, Rita Santamaria, Massimo Di Rosa and Angelo A. Izzo

Department of Experimental Pharmacology, University of Naples Federico II, Naples, Italy

## Abstract

Alzheimer's disease is widely held to be associated with oxidative stress due, in part, to the membrane action of  $\beta$ -amyloid peptide aggregates. Here, we studied the effect of cannabidiol, a major non-psychoactive component of the marijuana plant (*Cannabis sativa*) on  $\beta$ -amyloid peptide-induced toxicity in cultured rat pheocromocytoma PC12 cells. Following exposure of cells to  $\beta$ -amyloid peptide (1  $\mu$ g/mL), a marked reduction in cell survival was observed. This effect was associated with increased reactive oxygen species (ROS) production and lipid peroxidation, as well as caspase 3 (a key enzyme in the apoptosis cell-signalling cascade) appearance, DNA fragmentation and increased intracellular calcium.

Treatment of the cells with cannabidiol ( $10^{-7}$ – $10^{-4}$  M) prior to  $\beta$ -amyloid peptide exposure significantly elevated cell survival while it decreased ROS production, lipid peroxidation, caspase 3 levels, DNA fragmentation and intracellular calcium. Our results indicate that cannabidiol exerts a combination of neuroprotective, anti-oxidative and anti-apoptotic effects against  $\beta$ -amyloid peptide toxicity, and that inhibition of caspase 3 appearance from its inactive precursor, pro-caspase 3, by cannabidiol is involved in the signalling pathway for this neuroprotection.

**Keywords:** Alzheimer's disease, apoptosis,  $\beta$ -amyloid, cannabidiol, cannabinoid, neuroprotection.

*J. Neurochem.* (2004) **89**, 134–141.

Alzheimer's disease (AD) is the most common age-related neurodegenerative disorder (Koo *et al.* 1999). Regional neuronal degeneration, synaptic loss, presence of neurofibrillary tangles (NFTs) (Terry 1963) and senile plaques (Braak and Braak 1997) are specific hallmarks of this disease. While NFTs are the result of disposition of hyper-phosphorylated tau protein (Lee *et al.* 1991), senile plaques are complex extracellular lesions composed of a core of  $\beta$ -amyloid (A $\beta$ ) aggregates, surrounded by activated astrocytes, and dystrophic neuritis (Itagaki *et al.* 1989; Cotman *et al.* 1996).

Excessive accumulation of A $\beta$  peptide has been proposed as a pivotal event in the pathogenesis of AD, although the precise mechanism by which A $\beta$  induces neuronal death is still unknown (Hensley *et al.* 1994; Troy *et al.* 2001). Proposed mechanisms include production of oxygen free radicals (Behl *et al.* 1994), modification of cytosolic calcium homeostasis (Mattson 1992; Ueda *et al.* 1997), the Wnt pathway and activation of nuclear factor-kB (Green and Peers 2002; Caricasole *et al.* 2003). The cysteine proteases, known as caspases, are essential mediators of many of the pathways involved in executing the apoptotic programme

following A $\beta$  accumulation (Gervais *et al.* 1999). Caspase-mediated apoptosis can be modulated by several agents, including antioxidants (Behl *et al.* 1994), calcium channel blockers (Weiss *et al.* 1994) and growth factors (Mattson *et al.* 1993).

Cannabinoids are a group of C<sub>21</sub> compounds occurring in the glandular hairs of *Cannabis sativa* (Indian hemp) and consequently in hashish and marijuana, the well known drug

Received July 17, 2003; revised manuscript received November 27, 2003; accepted November 28, 2003.

Address correspondence and reprint requests to Giuseppe Esposito or Angelo A. Izzo, Department of Experimental Pharmacology, University of Naples Federico II, via D. Montesano 49, 80131 Naples, Italy.

E-mail: giuesp@interfree.it; aaizzo@unina.it

**Abbreviations used:** A $\beta$ ,  $\beta$ -amyloid; AD, Alzheimer's disease; [Ca<sup>2+</sup>]<sub>i</sub>, changes in intracellular free calcium levels; CBD, cannabidiol; DCF, 2',7'-dichlorofluorescein; DMEM, Dulbecco's modified Eagle's medium; DMSO, dimethylsulfoxide; H<sub>2</sub>DCF-DA, dichlorofluorescein-diacetate; MDA, malonyl dialdehyde; MTT, 3(4,5-dimethylthiazol-2-yl)2,5-diphenyl-2H-tetrazolium bromide; NFTs, neurofibrillary tangles; O.D., optical density; PBS, phosphate-buffered saline; RFU, relative fluorescence unit; ROS, reactive oxygen species;  $\Delta^9$ -THC,  $\Delta^9$ -tetrahydrocannabinol.

of abuse (Samuelsson 1999; Nocerino *et al.* 2000). The most important representative cannabinoid is  $\Delta^9$ -tetrahydrocannabinol ( $\Delta^9$ -THC), which has psychoactive properties depending upon the interaction with the cannabinoid CB<sub>1</sub> receptors within the brain (Pertwee 1997). Good quality hashish contains 4–10% and marijuana 0.1–2.7%  $\Delta^9$ -THC (Samuelsson 1999). Cannabidiol, the main component of the glandular hairs (up to 15%), is a non-psychoactive cannabinoid; it exerts a plethora of pharmacological effects, including anti-convulsive, sedative, hypnotic, anti-psychotic, anti-nausea and anti-inflammatory actions (Mechoulam *et al.* 2002). Cannabidiol is a potent antioxidant compound and it has been recently proposed to have a neuroprotective role during ischemic damage (Hampson *et al.* 1998, 2000).

The aim of the present study is to evaluate the possible neuroprotective effect of cannabidiol on  $\beta$ -amyloid-induced neurotoxicity. For this purpose we evaluated the effect of cannabidiol on cell viability, reactive oxygen species (ROS) formation and membrane lipoperoxidation, as well as neuronal apoptosis in cultured rat pheochromocytoma PC12 cells exposed to A $\beta$ .

## Materials and methods

### Materials

All the materials for cell culture were purchased from Biowittaker (Caravaggio, BG, Italy). Fetal calf serum and horse serum were from Hyclone (Logan, UT, USA). Human  $\beta$ -amyloid peptide (fragment 1–42) and CP55,940  $\{(-)-cis-3-[2-hydroxy-4(-, - dimethylheptyl)phenyl]-trans-4-(3-hydroxypropyl)cyclohexanol\}$  were from Tocris Cookson (Ballwin, UK). Antibody anti-caspase 3 was from Calbiochem (San Diego, CA, USA). Anti-mouse IgG was from Dako (Glostrup, Denmark). SR141716A [ $(N$ -piperidin-1-yl)-5-(4-chlorophenyl)-1- $\beta$ -2,4-dichlorophenyl)-4-methyl-1H-pyrazole-3-carboxamide hydrochloride] was a gift from Dr Madaleine Mosse (SANOFI-Reserche). Cannabidiol, Vitamin E (DL- $\alpha$ -tocopherol) and all the other reagents used, unless otherwise stated, were from Sigma (Milan, Italy). A $\beta$  fragment peptide was dissolved in pyrogen-free water, cannabidiol, vitamin E and SR141716A in dimethylsulfoxide (DMSO). The final DMSO concentration in the assay wells, irrespective of cannabinoid concentration, was always adjusted to 0.01%, a concentration that in preliminary experiments was found to have no effect on the response under study.

### Cell culture

PC12 cells (American Tissue Culture Catalogue number CRL1721) were grown in Dulbecco's modified Eagle's medium (DMEM) supplemented with 5% fetal calf serum, 15% horse serum, 2 mM glutamine, 100 U/mL penicillin and 100  $\mu$ g/mL streptomycin at 37°C in 5% CO<sub>2</sub>/95% air. Confluent cells were detached, counted and seeded into Petri dishes (10 cm diameter) at a density of  $1 \times 10^6$  cells/mL and allowed to adhere for 24 h at 37°C. Thereafter, the medium was replaced with fresh medium and cells were treated with A $\beta$  (1  $\mu$ g/mL) in the presence or absence of cannabidiol ( $10^{-7}$ – $10^{-4}$  M, given immediately before A $\beta$ ). In some experiments, the effect of

cannabidiol ( $10^{-5}$  M) was evaluated in the presence of the CB<sub>1</sub> receptor antagonist SR141716A (10 min before cannabidiol). The concentration of A $\beta$  was selected on the basis of our laboratory experience (i.e. a concentration which produced a submaximal effect on cell viability, lipid peroxidation and ROS formation) (data not shown).

### MTT cell viability assay

Cell viability was determined using a 3(4,5-dimethylthiazol-2-yl)2,5-diphenyl-2H-tetrazolium bromide (MTT) conversion assay (Mosman 1983). Briefly, the cells were plated in 96-well culture plates at the density of  $5 \times 10^3$  cells/well and allowed to adhere at 37°C for 2 h. Thereafter, the medium was replaced with fresh medium and the cells were incubated with A $\beta$  peptide (1  $\mu$ g/mL) in the presence or absence of cannabidiol ( $10^{-4}$ – $10^{-7}$  M). After 24 h, 25  $\mu$ L MTT (5 mg/mL in DMEM) were added and the cells incubated for an additional 3 h at 37°C. After this time, the cells were lysed and the dark blue crystals solubilized with 125  $\mu$ L of a solution containing 50% (v/v) N,N, dimethylformamide, 20% (w/v) sodium dodecyl-sulfate, with an adjusted pH of 4.5. The optical density (O.D.) of each well was measured with a microplate spectrophotometer (Titertek Multiscan MCC/340; Labsystem) equipped with a 620 nm filter. The cell viability in response to the treatment with A $\beta$  peptide in the presence or absence of cannabidiol was calculated as percentage of cell viability = (O.D. treated/O.D. control)  $\times$  100.

### Measurement of reactive oxygen species (ROS)

The formation of ROS was evaluated by means of the probe 2',7'-dichlorofluorescein (DCF) according to the method described by Bass *et al.* (1983) and Le Bel *et al.* (1992). Briefly, PC12 cells were seeded at a density of  $5 \times 10^3$  cells/well into 96-well plates and allowed to grow for 48 h. 2',7'-Dichlorofluorescein-diacetate (H<sub>2</sub>DCF-DA, Sigma) was then added directly to the growth medium at a final concentration of 5  $\mu$ M and the cells incubated for 1 h at 37°C. H<sub>2</sub>DCF-DA is a non-fluorescent permeant molecule which diffuses passively into cells; the acetates are then cleaved by intracellular esterases to form H<sub>2</sub>DCF which is thereby trapped within the cell. In the presence of intracellular ROS, H<sub>2</sub>DCF is rapidly oxidized to the highly fluorescent DCF. Therefore, cells were washed twice with phosphate-buffered saline (PBS), placed in fresh medium and treated with A $\beta$  (1  $\mu$ g/mL) with or without cannabidiol ( $10^{-7}$ – $10^{-4}$  M) for 24 h. After treatment, cells were washed twice with PBS and the plates placed in a fluorescent microplate reader (LS 55 Luminescence Spectrometer; Perkin Elmer, Beaconsfield, Bucks, UK). Fluorescence was monitored using an excitation wavelength of 490 nm and an emission wavelength of 520 nm. Results were expressed as Relative Fluorescence Units (RFU). In some experiments, the effect of the cannabinoid receptor agonist CP55,940 ( $10^{-8}$ – $10^{-5}$  M) was also evaluated.

### Lipid peroxidation assay

Malonyl dialdehyde (MDA), as the most abundant lipid peroxidation product from PC12 cells, was measured by the thiobarbituric acid colorimetric assay (Mihara and Uchiama 1978). Briefly, 24 h after treatment with A $\beta$  (1  $\mu$ g/mL) (in the presence or absence of cannabidiol  $10^{-4}$ – $10^{-7}$  M), the cells were washed three times with 1 $\times$  PBS, then scraped in 1 $\times$  PBS containing 0.5 mM EDTA and 1.13 mM butyl-hydroxytoluene. Cell lysis was performed by means of six cycles of freezing and thawing. To 450  $\mu$ L of cellular lysate was

added 1 mL 10% (w/v) trichloroacetic acid. After centrifugation at 1000 *g* for 10 min, 1.3 mL 0.5% (w/v) thiobarbituric acid were added and the mixture was heated at 100°C for 20 min. After cooling, MDA formation was recorded (Absorbance 530 nm and Absorbance 550 nm) in a Perkin Elmer (Massachusetts, MA, USA) spectrofluorimeter and the results are presented as ng MDA/ $1 \times 10^6$  cells.

#### Preparation of cytosolic fractions

Extracts of PC12 cells stimulated for 24 h with A $\beta$  (1  $\mu$ g/mL) in the presence or absence of cannabidiol ( $10^{-7}$ – $10^{-4}$  M) were prepared as previously described (Esposito *et al.* 2002). Briefly, harvested cells ( $1 \times 10^6$ ) were washed twice with ice-cold PBS and centrifuged at 180 *g* for 10 min at 4°C. The cell pellet was resuspended in 100  $\mu$ L of ice-cold hypotonic lysis buffer [10 mM HEPES, 1.5 mM MgCl<sub>2</sub>, 10 mM KCl, 0.5 mM phenylmethylsulfonyl fluoride, 1.5  $\mu$ g/mL soybean trypsin inhibitor, pepstatin A 7  $\mu$ g/mL, leupeptin 5  $\mu$ g/mL, 0.1 mM benzamidine, 0.5 mM dithiothreitol (DTT)] and incubated in ice for 15 min. The cells were lysed by rapid passage through a syringe needle five or six times and the cytoplasmic fraction was then obtained by centrifugation at 13 000 *g* for 1 min.

#### Western blot analysis

Immunoblotting analysis of caspase 3 protein was performed on a cytosolic fraction of PC12 cells treated as described (Samali *et al.* 1999). Cytosolic fraction proteins were mixed with gel loading buffer (50 mM Tris, 10% SDS, 10% glycerol 2-mercaptoethanol, 2 mg bromophenol/ml) in a ratio of 1 : 1, boiled for 5 min and centrifuged at 10 000 *g* for 10 min. Protein concentration was determined and equivalent amounts (50  $\mu$ g) of each sample were separated under reducing conditions in 12% SDS–polyacrylamide minigel. The proteins were transferred onto nitrocellulose membrane according to the manufacturer's instructions (Bio-Rad Laboratories, Hercules, CA, USA). The membranes were blocked by incubation at 4°C overnight in high salt buffer (50 mM Trizma base, 500 mM NaCl, 0.05% Tween-20) containing 5% bovine serum albumin; they were then incubated for 1 h with anti-caspase 3 antibody (1 : 2000) (Chemicon, Temecula, CA, USA) for 1 h at room temperature, followed by incubation with horseradish peroxidase (HRP)-conjugate secondary antibody (Dako). The immune complexes were developed using enhanced chemiluminescence detection reagents (Amersham, Cologno Monzese, Italy) according to the manufacturer's instructions and exposed to Kodak X-Omat film. The protein bands of caspase 3 and pro-caspase 3 on X-ray film were scanned and densitometrically analysed with a GS-700 imaging densitometer (Bio-Rad Laboratories, Hercules, CA, USA). Results are expressed as the ratio pro-caspase/caspase 3 (a low ratio is indicative of apoptosis).

#### DNA fragmentation analysis

To prepare cellular DNA, PC12 cells ( $4 \times 10^6$ , incubated for 24 h with or without A $\beta$ , alone, or in presence of cannabidiol  $10^{-5}$  M and  $10^{-4}$  M) were detached from 10 cm  $\varnothing$  culture dishes and the cell suspension was centrifuged at 100 *g* for 10 min (Gschwind and Huber 1995). The cell pellet was then washed twice with ice-cold PBS and cellular DNA was isolated using a DNA isolation kit (Roche, Basel, Switzerland) according to the manufacturer's instructions. A 20  $\mu$ L aliquot of each DNA sample was analysed on a 1.5% agarose gel containing ethidium bromide (1  $\mu$ g/mL) in TBE buffer (100 mM Tris, 90 mM boric acid, 1 mM EDTA) and run for 90 min

at 70 V. After electrophoresis, the DNA was visualized under UV light and photographed.

#### Measurement of intracellular calcium levels

Changes in intracellular free calcium levels ( $[Ca^{2+}]_i$ ) in a suspension of PC12 cells were determined by the fura-2 method (Sandirasegarane *et al.* 1994; Zhou *et al.* 1996). Upon binding calcium, fura-2 shifts its excitation wavelength from 380 to 340 nm, and the ratio of the fluorescence caused by excitation at 340 nm to that at 380 nm ( $R_{340/380}$ ) reflects changes in  $[Ca^{2+}]_i$  (Zhou *et al.* 1996). PC12 cells were incubated with 5  $\mu$ M fura-2/acetoxymethyl ester (fura-2/AM) in HBH (concentration in mM: NaCl 137, KCl 5.4, MgCl<sub>2</sub> 0.49, KH<sub>2</sub>PO<sub>4</sub> 0.44, Na<sub>2</sub>HPO<sub>4</sub> 0.64, NaHCO<sub>3</sub> 3, glucose 5.5, CaCl<sub>2</sub> 1.26 and HEPES 20, pH 7.4) in a 37°C incubator for 60 min, and washed twice before taking an aliquot for  $[Ca^{2+}]_i$  measurement. Each aliquot contained  $5 \times 10^3$  cells suspended in a total volume of 200  $\mu$ L HBH. Basal  $[Ca^{2+}]_i$  values were obtained after 2 min of equilibration and  $[Ca^{2+}]_i$  measurements were performed 2, 5, 10 and 15 min after A $\beta$  administration. As A $\beta$  produced a maximal increase 5 min after its administration, the effect of cannabidiol ( $10^{-6}$ – $10^{-4}$  M, administered 15 min before A $\beta$  1  $\mu$ g/mL) or vitamin E ( $10^{-5}$  M, used as a reference compound) was assessed at this time-point. Measurements were performed with a spectrofluorometer with an LS55 luminescence spectrometer (Perkin Elmer).

#### Statistical analysis

Results were expressed as the mean  $\pm$  SEM of *n* experiments. Statistical analysis was determined with ANOVA and multiple comparisons were performed by Bonferroni's test, with  $p < 0.05$  considered significant.

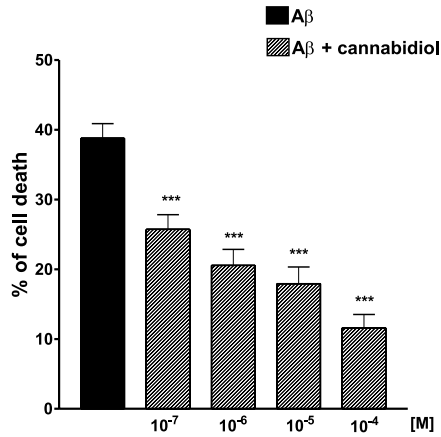
## Results

#### Cell viability

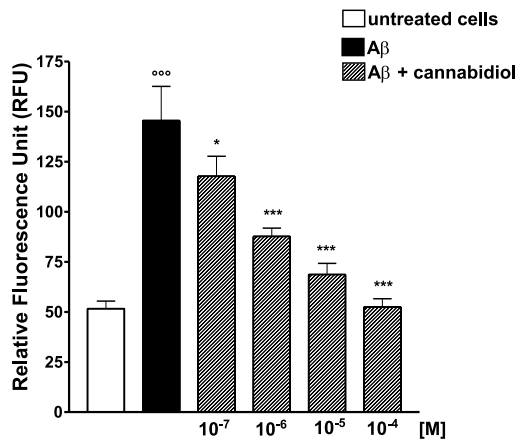
MTT assay was used to detect cell viability. Incubation of PC12 cells with A $\beta$  (1  $\mu$ g/mL) for 24 h caused  $38.8 \pm 2.2\%$  of cell death (Fig. 1). Cannabidiol ( $10^{-7}$ – $10^{-4}$  M), added to the cells immediately before treatment with A $\beta$ , significantly reduced cell death. The effect of cannabidiol was significant for all the concentrations tested. The cannabinoid receptor agonist CP55,940 also reduced A $\beta$ -induced cell death (cell death: A $\beta$   $37.0 \pm 3.8$ ; CP55,940  $10^{-8}$  M + A $\beta$   $13.6 \pm 7.9$ ; CP55,940  $10^{-7}$  M + A $\beta$   $21.7 \pm 9.0$ ; CP55,940  $10^{-6}$  M + A $\beta$   $8.5 \pm 4.2$ ,  $p < 0.05$ , CP55,940  $10^{-5}$  M + A $\beta$   $6.6 \pm 3.8$ ,  $p < 0.05$ ,  $n = 3$ –4).

#### Measurement of reactive oxygen species (ROS)

ROS accumulation, estimated using a converting reaction of the probe DCFH<sub>2</sub> to DCF, was significantly ( $p < 0.001$ ) increased after incubation with A $\beta$  (1  $\mu$ g/mL), as indicated by the increase in RFU (Fig. 2). Incubation of PC12 with cannabidiol ( $10^{-7}$ – $10^{-4}$  M) significantly inhibited A $\beta$ -induced increase in ROS accumulation (Fig. 2). The effect of cannabidiol ( $10^{-5}$  M) was not significantly modified by the cannabinoid CB1 receptor antagonist SR141716A ( $10^{-5}$  M) (RFU: control  $53 \pm 5$ ; A $\beta$   $146 \pm 11$ ; cannabidiol +



**Fig. 1** Effect of cannabidiol ( $10^{-7}$ – $10^{-4}$  M) on  $\beta$ -amyloid (A $\beta$ , 1  $\mu$ g/mL)-induced cell death. Cell death, evaluated by the reduction of the tetrazolium salt MTT, was assessed 24 h after incubation with A $\beta$ . Cannabidiol was added immediately before A $\beta$ . Results, expressed as the percentage of cell death, are the means  $\pm$  SEM of five experiments in triplicate. Untreated cells were assumed to be vital (100% viability). \*\*\* $p$  < 0.001 versus A $\beta$ .



**Fig. 2** Effect of cannabidiol ( $10^{-7}$ – $10^{-4}$  M) on  $\beta$ -amyloid (A $\beta$ , 1  $\mu$ g/mL)-induced formation of reactive oxygen species (ROS). ROS formation, evaluated by the oxidation of 2',7'-dichlorofluorescein (H<sub>2</sub>DCF) to the fluorescent 2',7'-dichlorofluorescein (DCF), was assessed 24 h after incubation with A $\beta$ . Cannabidiol was added immediately before A $\beta$ . Results are the means  $\pm$  SEM of six experiments in triplicate. \*\*\* $p$  < 0.001 versus control (untreated cells); \* $p$  < 0.05 and \*\*\* $p$  < 0.001 versus A $\beta$ .

A $\beta$  61  $\pm$  11; A $\beta$  + cannabidiol + SR141716A 66  $\pm$  6;  $n$  = 5). Given alone, SR141716A ( $10^{-5}$  M) did not modify ROS accumulation either in untreated cells or in cells incubated with A $\beta$  (data not shown). Cannabidiol did not affect viability in untreated cells (data not shown).

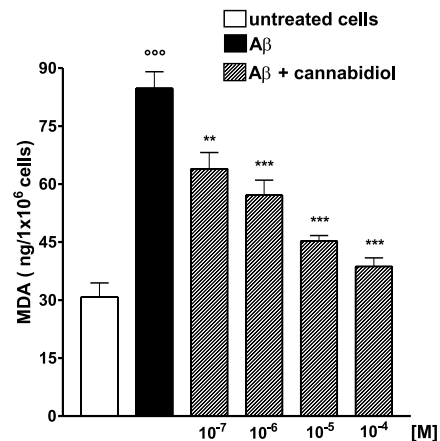
#### Lipid peroxidation assay

The thiobarbituric acid colorimetric assay, which measures malondialdehyde (MDA) levels, was used to quantify lipid

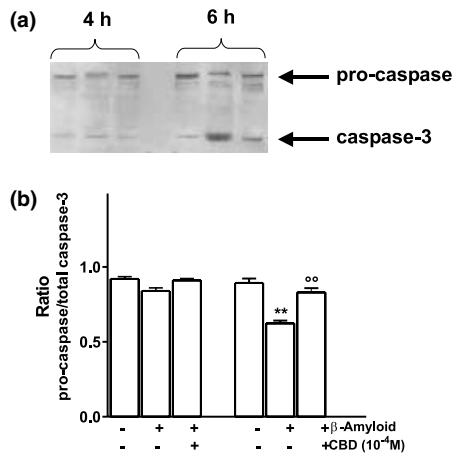
peroxidation. Exposure of PC12 cells to A $\beta$  (1  $\mu$ g/mL) caused a significant increase in MDA levels (indicating that lipid peroxidation occurs) (Fig. 3). Lipid peroxidation of A $\beta$ -treated cells was concentration-dependently reduced by cannabidiol ( $10^{-7}$ – $10^{-4}$  M). The effect of cannabidiol ( $10^{-5}$  M) was not significantly modified by the cannabinod CB<sub>1</sub> receptor antagonist SR141716A  $10^{-5}$  M (MDA ng/10<sup>6</sup> cells: untreated cells 31  $\pm$  3; A $\beta$  85  $\pm$  4; cannabidiol + A $\beta$  45  $\pm$  4; A $\beta$  + cannabidiol + SR141716A 42  $\pm$  3;  $n$  = 5). Given alone, SR141716A ( $10^{-5}$  M) did not change MDA levels either in untreated cells (MDA ng/10<sup>6</sup> cells: untreated cells 31  $\pm$  3; SR141716A 32  $\pm$  3;  $n$  = 5) or cells incubated with A $\beta$  (MDA ng/10<sup>6</sup> cells: A $\beta$  85  $\pm$  4; A $\beta$  + SR141716A 81  $\pm$  4;  $n$  = 5).

#### Apoptosis assay

We evaluated the appearance of the caspase 3 band in a cellular extract of PC12 cells by western blot analysis as a hallmark of apoptosis. In our time-course experiments, we showed that PC12 cells start to undergo to apoptosis 4 h after treatment with A $\beta$  (1  $\mu$ g/mL), but a marked apoptosis was evident at 6 h after treatment (Fig. 4a). Analysis of the pro-caspase/total caspase 3 ratio showed that A $\beta$  significantly induced apoptosis (as indicated by the decreased ratio) 6 h after treatment, and this increase was significantly counteracted by cannabidiol ( $10^{-4}$  M) (Fig. 4b). These results suggest that apoptosis in A $\beta$ -treated PC12 cells is mediated by caspase 3, and the protective action of cannabidiol may, at least in part, be attributed to inhibition of the caspase cascade.



**Fig. 3** Effect of cannabidiol ( $10^{-7}$ – $10^{-4}$  M) on  $\beta$ -amyloid (A $\beta$ , 1  $\mu$ g/mL)-induced lipid peroxidation. Lipid peroxidation, evaluated by the thiobarbituric acid colorimetric assay [which measures malondialdehyde (MDA)], was assessed 24 h after incubation with A $\beta$ . Cannabidiol was added immediately before A $\beta$ . Results, expressed as concentration of MDA, are the means  $\pm$  SEM of six experiments in triplicate. \*\*\* $p$  < 0.001 versus control (untreated cells); \*\* $p$  < 0.01 and \*\*\* $p$  < 0.001 versus A $\beta$ .



**Fig. 4** Effect of cannabidiol (CBD,  $10^{-4}$  M) on  $\beta$ -amyloid ( $1 \mu\text{g/mL}$ )-induced caspase 3 activation. (a) Representative western blot analysis of caspase 3 activation from its inactive precursor, pro-caspase 3, in PC12 cell homogenate treated with and without  $A\beta$  and in the presence of cannabidiol; arrows indicate cleaved (activated) caspase 3 at about 17 kDa and its precursor, pro-caspase, at about 43 kDa. (b) Ratio pro-caspase/total caspase 3 (a decreased ratio is indicative of apoptosis). \*\* $p < 0.01$  versus control cells (at 6 h), °° $p < 0.01$  versus  $\beta$ -amyloid (at 6 h),  $n = 3$  separate experiments.

### DNA fragmentation

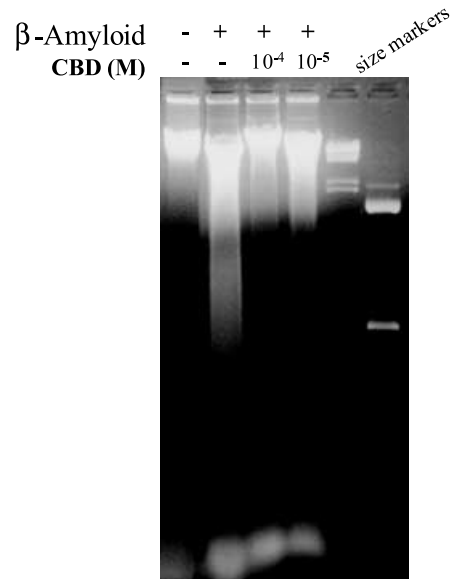
Experiments on DNA fragmentation are shown in Fig. 5. Untreated PC12 cells showed no detectable DNA fragmentation. By contrast, DNA extracted from PC12 cells after 24 h of exposure to  $A\beta$  was clearly fragmented. Pretreatment with cannabidiol ( $10^{-5}$  M and  $10^{-4}$  M) reduced  $A\beta$ -induced DNA ladders, the effect being more evident for the  $10^{-4}$  M concentration.

### Intracellular calcium levels

$A\beta$  ( $1 \mu\text{g/mL}$ ) produced a significant increase in  $[Ca^{2+}]_i$  2–15 min after its administration, with a maximal effect after 5 min (data not shown). Therefore, the effects of cannabidiol were assessed at this time point.  $A\beta$ -induced changes in  $[Ca^{2+}]_i$  were reduced by both cannabidiol ( $R_{340/380}$ : basal  $0.90 \pm 0.02$ ;  $A\beta$   $1.20 \pm 0.06$ ;  $A\beta$  + cannabidiol  $10^{-6}$  M  $1.10 \pm 0.07$ ;  $A\beta$  + cannabidiol  $10^{-5}$  M  $1.08 \pm 0.07$ ;  $A\beta$  + cannabidiol  $10^{-4}$  M  $0.91 \pm 0.07$ ;  $n = 3-4$ ,  $p < 0.05$  for the  $10^{-5}$  M and  $10^{-4}$  M concentrations) and vitamin E  $10^{-5}$  M ( $R_{340/380}$ : basal  $0.90 \pm 0.02$ ;  $A\beta$   $1.20 \pm 0.06$ ;  $A\beta$  + vitamin E  $0.93 \pm 0.03$ ;  $n = 3$ ,  $p < 0.05$ ).

### Discussion

The accumulation of plaques containing  $A\beta$  is an invariant feature of AD pathology and there is abundant evidence suggesting that  $A\beta$  contributes to the aetiology of AD (Carlson 2003; Golde 2003). In the present paper we report that cannabidiol, a major non-psychotropic component of



**Fig. 5** DNA fragmentation in PC12 untreated cells and in PC12 cells treated with  $\beta$ -amyloid ( $1 \mu\text{g/mL}$ ), alone or in the presence of cannabidiol  $10^{-4}$  M and  $10^{-5}$  M. Cellular DNA was extracted and visualized on agarose gel as described in the Materials and methods section. Each lane was loaded with the same amount of DNA. DNA size markers used were: (left) phage lambda DNA digested with Hind III restriction enzyme; (right) pBR322 DNA digested with Hinf I restriction enzyme.

marijuana, prevents  $A\beta$ -induced neurotoxicity, ROS production and lipid peroxidation; it also inhibits caspase 3 appearance (from the inactive precursor pro-caspase) in PC12 cells.

The MTT assay has been widely used as an index of cell survival and proliferation. Previous investigators have shown that cannabidiol produces a modest or no reduction in C6 glioma cell viability after 6 days of incubation (Jacobsson *et al.* 2000). Here, we have shown that exposure of PC12 cells to  $A\beta$  produces a reduction in cell viability, and that cannabidiol protects, in a concentration-dependent manner,  $A\beta$ -induced neurotoxicity. Consistent with these results, cannabidiol has been shown to reduce glutamate-, N-methyl-D-aspartate- and kainate-induced toxicity in rat cortical neurones (Hampson *et al.* 1998).

The cellular events involving free radical oxidative stress may be one basic pathway leading to cell degeneration. Increased oxidative stress and disturbed defensive mechanisms occur in the brain of AD patients, which might result in a self-propagating cascade of neurodegenerative events (Markesbery 1997). ROS have been shown to be involved in cell damage and death induced by amyloid peptides (Mattson *et al.* 1993; Brera *et al.* 2000) and antioxidant therapy has led to an improvement in AD patients. Excessive ROS can lead to a number of detrimental effects, including lipid peroxidation. In our experiments, PC12 cells exhibited

increased ROS levels and lipid peroxidation following exposure to A $\beta$  peptide. The ability of A $\beta$  to increase both ROS and lipid peroxidation has been documented previously in a number of neuronal cell types, including PC12 cells (Xiao *et al.* 2002; Onoue *et al.* 2002; Guan and Nordberg 2003). However, we have shown for the first time that cannabidiol reduced, in a concentration-dependent manner, A $\beta$ -induced ROS accumulation and lipid peroxidation. Since antioxidants are known to attenuate A $\beta$ -induced oxidative injury (Cash *et al.* 2002), it is likely that the previously reported antioxidant properties of cannabidiol could contribute to its beneficial effect. Other studies have shown that cannabidiol antagonizes the oxidative stress induced by retinoid anhydroretinol in lymphoblastoid cells (Chen and Buck 2000) and prevents hydrogen peroxide-induced oxidative damage in neuronal cultures (Hampson *et al.* 1998).

In contrast to  $\Delta^9$ -THC, cannabidiol is not a cannabinoid receptor agonist (Mechoulam *et al.* 2002); nevertheless, cannabidiol may enhance the endocannabinoid action at CB<sub>1</sub> receptors by its ability to block the uptake and the enzymatic degradation of the endocannabinoid anandamide (Bisogno *et al.* 2001). Furthermore, Petitet *et al.* (1998) have shown that cannabidiol, in the micromolar range, behaves as a CB<sub>1</sub> antagonist in the rat brain. The importance of CB<sub>1</sub> receptors in neuroprotection has been previously documented (Grundy *et al.* 2001; Van der Stelt *et al.* 2001; Marsicano *et al.* 2002). Milton (2002) showed that the endogenous cannabinoids anandamide and noladin ether have a protective effect on A $\beta$ -induced toxicity through activation of CB<sub>1</sub> receptors in human teratocarcinoma cells. However, it is very unlikely that the protective (anti-oxidative) effect of cannabidiol observed here involves CB<sub>1</sub> receptors as the potent and selective CB<sub>1</sub> receptor antagonist, SR141716A, at a concentration previously shown to be fully effective (Esposito *et al.* 2001, 2002), did not show a protective effect (when administered alone), nor did it modify the protective action of cannabidiol. In agreement with our results, Molderings *et al.* (2002) showed (by using binding and PCR techniques) that rat pheochromocytoma PC12 cells are not endowed with CB<sub>1</sub> receptors. It is interesting to note that in these cells, we have shown that the cannabinoid agonist CP55,290 also has a protective effect on A $\beta$ -induced toxicity, thus confirming the existence of a non-CB<sub>1</sub> mediated protective effect of cannabinoids.

Several experimental studies suggest an association between deposition of A $\beta$ , oxidative stress and apoptosis associated with AD and ageing (Kokoszka *et al.* 2001; Marx 2001). The A $\beta$  peptide has been shown to induce apoptosis in neurones, including PC12 cells, which may be responsible for neuronal death in AD (Martin *et al.* 2001; Troy *et al.* 2001). Apoptosis is associated with the activation of a family of aspartic acid-specific cysteine proteases, referred to as caspases (Nicholson and Thornberry 1997). There are at least 14 caspases identified in mammalian cells that are synthesized

as inactive precursor molecules, pro-caspase, and are converted by proteolytic cleavage to the active heterodimer (Thornberry and Lazebnik 1998). The activation of pro-caspase 3 to caspase 3 is a central event in the execution phase of apoptosis and appears to serve as the convergence point of different apoptotic signalling pathways (Nicholson and Thornberry 1997). In the present study, we have shown that cannabidiol increased pro-caspase 3 levels and, in parallel, reduced caspase 3 levels in A $\beta$ -treated PC12 cells, suggesting that the cannabinoid could exert a protective role at the execution phase of apoptosis. The inhibitory effect of cannabidiol on apoptosis was strengthened by the observation that this cannabinoid inhibited the fragmentation of DNA (a hallmark of apoptosis) induced by A $\beta$ . The fragmentation of DNA after A $\beta$  has been previously documented (Gschwind and Huber 1995).

The pharmacological manipulation of neuronal calcium homeostasis may be a useful therapeutic approach in neurodegenerative pathologies, including AD, and a rise in [Ca<sup>2+</sup>]<sub>i</sub> has been suggested to be responsible for toxic effects of A $\beta$  (Mattson 2002). Previous investigators have shown that A $\beta$ -induced neurotoxic actions in PC12 cells are associated with an increase in [Ca<sup>2+</sup>]<sub>i</sub> and that this effect is blocked by antioxidants such as vitamin E (Zhou *et al.* 1996). In addition, it has been suggested that the increase in [Ca<sup>2+</sup>]<sub>i</sub> induced by A $\beta$  in PC12 cells is not the result of an influx of calcium through voltage-dependent calcium channels, but rather it is the result of a free radical-mediated process. In the present study we have shown that cannabidiol counteracted the A $\beta$ -induced increase in [Ca<sup>2+</sup>]<sub>i</sub>, which is in agreement with the antioxidant properties of this cannabinoid reported here and elsewhere (Hampson *et al.* 1998).

In summary, the results reported herein indicate, for the first time, that cannabidiol exerts a combination of neuroprotective, anti-oxidative and anti-apoptotic effects against A $\beta$  insult. Inhibition of the activity of the apoptotic enzyme caspase 3 is likely to be involved in signalling pathways for the neurotrophic effect of cannabidiol. Given the low toxicity of cannabinol shown in humans (Cunha *et al.* 1980; Consroe *et al.* 1991), this non-psychoactive component of marijuana may play an important role in counteracting neuronal cell death occurring in Alzheimer's disease.

### Acknowledgements

We are grateful to Dr Madaleine Mossé from SANOFI-Recherche (Montpellier, France) for the gift of cannabinoid antagonist. This work was supported by the 'Enrico and Enrica Sovena Foundation', SESIRCA (Regione Campania) and 'Cofinanziamento Murst'.

### References

- Bass D. A., Parce J. W., Dechatelet L. R., Szejda P., Seeds M. C. and Thomas M. (1983) Flow cytometric studies of oxidative product

- formation by neutrophils: a graded response to membrane stimulation. *J. Immunol.* **130**, 1910–1917.
- Behl C., Davis J. B., Lesley R. and Shubert D. (1994) Hydrogen peroxide mediates amyloid beta protein toxicity. *Cell* **77**, 817–827.
- Bisogno T., Hanus L., De Petrocellis L., Tchilibon S., Ponde D. E., Brandi I., Moriello A. S., Davis J. B., Mechoulam R. and Di Marzo V. (2001) Molecular targets for cannabidiol and its synthetic analogues: effect on vanilloid VR1 receptors and on the cellular uptake and enzymatic hydrolysis of anandamide. *Br. J. Pharmacol.* **134**, 845–852.
- Braak H. and Braak E. (1997) Frequency of stages of Alzheimer-related lesions in different age categories. *Neurobiol. Aging* **18**, 351–357.
- Brera B., Serrano A. and de Ceballos M. L. (2000) Beta-amyloid peptides are cytotoxic to astrocytes in culture: a role for oxidative stress. *Neurobiol. Dis.* **7**, 395–405.
- Caricasole A., Copani A., Caruso A., Caraci F., Iacovelli L., Sortino M. A., Terstappen G. C. and Nicoletti F. (2003) The Wnt pathway, cell-cycle activation and beta-amyloid: novel therapeutic strategies in Alzheimer's disease? *Trends Pharmacol. Sci.* **24**, 233–238.
- Carlson G. A. (2003) A welcoming environment for amyloid plaques. *Nat. Neurosci.* **6**, 328–330.
- Cash A. D., Perry G. and Smith M. A. (2002) Therapeutic potential in Alzheimer disease. *Curr. Med. Chem.* **9**, 1605–1610.
- Chen Y. and Buck J. (2000) Cannabinoids protect cells from oxidative cell death: a receptor-independent mechanism. *J. Pharmacol. Exp. Ther.* **293**, 807–812.
- Consroe P., Laguna J., Allender J., Snider S., Stern L., Sandyk R., Kennedy K. and Schram K. (1991) Controlled clinical trial of cannabidiol in Huntington's disease. *Pharmacol. Biochem. Behav.* **40**, 701–708.
- Cotman C. W., Tenner A. J. and Cummings B. J. (1996)  $\beta$ -Amyloid converts an acute phase injury response to chronic injury responses. *Neurobiol. Aging* **17**, 723–731.
- Cunha J. M., Carlini E. A., Pereira A. E., Ramos O. L., Pimentel C., Gagliardi R., Sanvito W. L., Lander N. and Mechoulam R. (1980) Chronic administration of cannabidiol to healthy volunteers and epileptic patients. *Pharmacology* **21**, 175–185.
- Esposito G., Izzo A. A., Di Rosa M. and Iuvone T. (2001) Selective cannabinoid CB1 receptor-mediated inhibition of inducible nitric oxide synthase protein expression in C6 rat glioma cells. *J. Neurochem.* **78**, 835–841.
- Esposito G., Ligresti A., Izzo A. A., Bisogno T., Ruvo M., Di Rosa M., Di Marzo V. and Iuvone T. (2002) The endocannabinoid system protects rat glioma cells against HIV-1 Tat protein-induced cytotoxicity. Mechanism and regulation. *J. Biol. Chem.* **277**, 50348–50354.
- Gervais F. G., Xu D., Robertson G. S. et al. (1999) Involvement of caspases in proteolytic cleavage of Alzheimer's amyloid-beta precursor protein and amyloidogenic A beta peptide formation. *Cell* **97**, 395–406.
- Golde T. E. (2003) Alzheimer disease therapy: can the amyloid cascade be halted? *J. Clin. Invest.* **111**, 11–18.
- Green K. N. and Peers C. (2002) Divergent pathways account for two distinct effects of amyloid beta peptides on exocytosis and Ca(2+) currents: involvement of ROS and NF-kappaB. *J. Neurochem.* **81**, 1043–1051.
- Grundy R. I., Rabuffetti M. and Beltramo M. (2001) Cannabinoids and neuroprotection. *Mol. Neurobiol.* **24**, 29–51.
- Gschwind M. and Huber G. (1995) Apoptotic cell death induced by  $\beta$ -amyloid<sub>1–42</sub> peptide is cell type dependent. *J. Neurochem.* **65**, 292–300.
- Guan Z. Z., Yu W. F. and Nordberg A. (2003) Dual effects of nicotine on oxidative stress and neuroprotection in PC12 cells. *Neurochem. Int.* **43**, 243–249.
- Hampson A. J., Grimaldi M., Axelrod J. and Wink D. (1998) Cannabidiol and (-)  $\Delta^9$ -tetrahydrocannabinol are neuroprotective antioxidants. *Proc. Natl Acad. Sci. USA* **95**, 8268–8273.
- Hampson A. J., Grimaldi M., Lolic M., Wink D., Rosenthal R. and Axelrod J. (2000) Neuroprotective antioxidants from marijuana. *Ann. NY Acad. Sci.* **899**, 274–282.
- Hensley K., Carney J. M., Mattson M. P., Aksenova M., Harris M., Wu J. F., Floyd R. A. and Butterfield D. A. (1994) A model for beta amyloid aggregation and neurotoxicity based on free radical generation by the peptide: relevance to Alzheimer disease. *Proc. Natl Acad. Sci. USA* **91**, 3270–3274.
- Itagaki S., McGeer P. L., Akiyama H., Zhu S. and Selkoe D. (1989) Relationship of microglia and astrocytes to amyloid deposits of Alzheimer disease. *J. Neuroimmunol.* **24**, 173–182.
- Jacobsson S. O., Rongard E., Stridh M., Tiger G. and Fowler C. J. (2000) Serum-dependent effects of tamoxifen and cannabinoids upon C6 glioma cell viability. *Biochem. Pharmacol.* **60**, 1807–1813.
- Kokoszka J. E., Coskun P., Esposito L. A. and Wallace D. C. (2001) Increased mitochondrial oxidative stress in the Sod2 (+/-) mouse results in the age-related decline of mitochondrial function culminating in increased apoptosis. *Proc. Natl Acad. Sci. USA* **98**, 2278–2283.
- Koo E. H., Lansbury P. T. and Kelly J. W. (1999) Amyloid diseases: abnormal protein aggregation in neurodegeneration. *Proc. Natl Acad. Sci. USA* **96**, 9989–9990.
- Le Bel C., Ischiropoulos H. and Bondy S. C. (1992) Evaluation of the probe 2',7'-dichlorofluorescein as an indicator of reactive oxygen species formation and oxidative stress. *Chem. Res. Toxicol.* **5**, 227–231.
- Lee V. M. Y., Balin B. J., Otvos L. and Trojanowski J. Q. (1991) A68: a major subunit of paired helical filaments and derivatized forms of normal tau. *Science* **251**, 675–678.
- Markesbery W. R. (1997) Oxidative stress hypothesis in Alzheimer's disease. *Free Radic. Biol. Med.* **23**, 134–147.
- Marsicano G., Moosmann B., Hermann H., Lutz B. and Behl C. (2002) Neuroprotective properties of cannabinoids against oxidative stress: role of the cannabinoid receptor CB1. *J. Neurochem.* **80**, 448–456.
- Martin D., Salinas M., Lopez-Valdaliso R., Serrano E., Recuero M. and Cuadrado A. (2001) Effect of the Alzheimer amyloid fragment A $\beta$ (25–35) on Akt/PKB kinase and survival of PC12 cells. *J. Neurochem.* **78**, 1000–1008.
- Marx J. (2001) Neuroscience. New leads on the 'how' of Alzheimer's. *Science* **293**, 2192–2194.
- Mattson M. P. (2002) Oxidative stress, perturbed calcium homeostasis, and immune dysfunction in Alzheimer's disease. *J. Neurovirol.* **8**, 539–550.
- Mattson M. P., Lovell M. A., Ehmann W. D. and Markesbery W. R. (1993) Comparison of the effects of elevated intracellular aluminum and calcium levels on neuronal survival and tau immunoreactivity. *Brain Res.* **602**, 21–31.
- Mattson M. P., Cheng B., Davis D., Bryant K., Lieberburg I. and Rydel R. E. (1992) beta-Amyloid peptides destabilize calcium homeostasis and render human cortical neurons vulnerable to excitotoxicity. *J. Neurosci.* **12**, 376–389.
- Mechoulam R., Parker L. A. and Gallily R. (2002) Cannabidiol: an overview of some pharmacological aspects. *J. Clin. Pharmacol.* **42**, 11S–19S.
- Mihara M. and Uchiama M. (1978) Determination of malonaldehyde precursor in tissues by thiobarbituric acid test. *Anal. Biochem.* **86**, 271–278.
- Milton N. G. (2002) Anandamide and noladin ether prevent neurotoxicity of the human amyloid-beta peptide. *Neurosci. Lett.* **332**, 127–130.

- Molderings G. J., Bonisch H., Hammermann R., Gothert M. and Bruss M. (2002) Noradrenergic release-inhibiting receptors on PC12 cells devoid of  $\alpha_2$  and CB1 receptors: similarities to presynaptic imidazoline and edg receptors. *Neurochem. Int.* **40**, 157–167.
- Mosman T. (1983) Rapid colorimetric assay for cellular growth and survival: application to proliferation and cytotoxicity assay. *J. Immunol. Meth* **65**, 53–63.
- Nicholson D. W. and Thornberry N. A. (1997) Caspases: killer proteases. *Trends Biochem. Sci.* **22**, 299–306.
- Nocerino E., Amato M. and Izzo A. A. (2000) Cannabis and cannabinoid receptors. *Fitoterapia* **71**, S6–S12.
- Onoue S., Endo K., Ohshima K., Yajima T. and Kashimoto K. (2002) The neuropeptide PACAP attenuates beta-amyloid (1–42)-induced toxicity in PC12 cells. *Peptides* **23**, 1471–1478.
- Pertwee R. G. (1997) Pharmacology of cannabinoid CB1 and CB2 receptors. *Pharmacol. Ther.* **74**, 129–180.
- Petitot F., Jeantaud B., Reibaud M., Imperato A. and Dubroeuq M. C. (1998) Complex pharmacology of natural cannabinoids: evidence for partial agonist activity of delta9-tetrahydrocannabinol and antagonist activity of cannabidiol on rat brain cannabinoid receptors. *Life Sci.* **63**, PL1–PL6.
- Samali A., Nordgren H., Zhivotovsky B., Peterson E. and Orrenius S. (1999) A comparative study of apoptosis and necrosis in HepG2 cells: oxidant-induced caspase inactivation leads to necrosis. *Biochem. Biophys. Res. Commun.* **255**, 6–11.
- Samuelsson G. (1999) *Drugs of Natural Origin*. Swedish Pharmaceutical Press, Stockholm, Sweden.
- Sandrasegarane L., Herman R. J. and Gopalakrishnan V. (1994) High glucose attenuates peptide agonist-evoked increases in cytosolic free  $[Ca^{2+}]$  in rat aortic smooth muscle cells. *Diabetes* **43**, 1033–1040.
- Terry R. D. (1963) The fine structure of neurofibrillary tangles in Alzheimer's disease. *J. Neuropathol. Exp. Neurol.* **22**, 629–642.
- Thornberry N. A. and Lazebnik Y. (1998) Caspases: enemies within. *Science* **281**, 1312–1316.
- Troy C. M., Rabacchi S. A., Xu Z., Maroney A. C., Connors T. J., Shelanski M. L. and Greene L. A. (2001) beta-Amyloid-induced neuronal apoptosis requires c-Jun N-terminal kinase activation. *J. Neurochem.* **77**, 157–164.
- Ueda K., Shinohara S., Yagami T., Asakura K. and Kawasaki K. (1997) Amyloid  $\beta$ -protein potentiates  $Ca^{2+}$  influx through l-type voltage-sensitive  $Ca^{2+}$  channels: a possible involvement of free radicals. *J. Neurochem.* **68**, 265–271.
- Van der Stelt M., Veldhuis W. B., van Haften G. W., Fezza F., Bisogno T., Bar P. R., Veldink G. A., Vliegthart J. F., Di Marzo V. and Nicolay K. (2001) Exogenous anandamide protects rat brain against acute neuronal injury in vivo. *J. Neurosci.* **21**, 8765–8771.
- Weiss J. H., Pike C. J. and Cotman C. W. (1994)  $Ca^{2+}$  channel blockers attenuate beta-amyloid peptide toxicity to cortical neurons in culture. *J. Neurochem.* **62**, 372–375.
- Xiao X. Q., Zhang H. Y. and Tang X. C. (2002) Huperzine A attenuates amyloid beta-peptide fragment 25–35-induced apoptosis in rat cortical neurons via inhibiting reactive oxygen species formation and caspase-3 activation. *J. Neurosci. Res.* **67**, 30–36.
- Zhou Y., Gopalakrishnan V. and Richardson J. S. (1996) Actions of neurotoxic beta-amyloid on calcium homeostasis and viability of PC12 cells are blocked by antioxidants but not by calcium channel antagonists. *J. Neurochem.* **67**, 1419–1425.